

U.S. Army Corps of Engineers, Los Angeles District **Prado Basin Project Updates**

Host: Inland Empire Utilities Agency
January 19, 2017 – 10:00 a.m.

Purpose: *To provide project overviews and updates to regional stakeholders for U.S. Army Corps of Engineers (USACE) projects within the Prado Dam Flood Control Basin, and to identify opportunities to improve project coordination.*

- 1. Welcome and Self-Introductions** – Inland Empire Utilities Agency
- 2. Overview of USACE Roles & Responsibilities within Prado Basin** – Eileen Takata, USACE, Watershed Program Manager
 - a. Land Ownership and Flood Risk Management
 - b. Reservoir Regulations and Dam/Levee Safety
 - c. Leased Lands and O&M
 - d. CWA Section 404 (Regulatory) and Section 408 (Engineering)
- 3. Santa Ana River Mainstem (Flood Risk Management) Project Overview** - Damien Lariviere, USACE, Project Manager
- 4. Prado Basin Feasibility Study Overview** - Christopher Jones, USACE, Principal Biologist
- 5. Prado Dam Master Plan Update Overview** – Wendy Loeffler, RECON Environmental, Project Manager
- 6. Future Coordination Opportunities, Group Discussion** – Eileen T.
- 7. Adjourn**

U.S. ARMY CORPS OF ENGINEERS PRADO BASIN ROLES & RESPONSIBILITIES BRIEF OVERVIEW

Eileen Takata, Watershed Program Manager
Los Angeles District, Corps of Engineers
19 January 2017

"The views, opinions and findings contained in this report are those of the authors(s) and should not be construed as an official Department of the Army position, policy or decision, unless so designated by other official documentation."



**US Army Corps
of Engineers.**



ROLES & RESPONSIBILITIES IN PRADO BASIN

- Flood Risk Management
 - Prado Dam Oper & Maint. (Asset Mgt/Ops)
 - Reservoir Operations (Eng/H&H)
 - Dam/Levee Safety (Eng/Geotechnical)
 - Section 408 (Eng/Design)
 - Santa Ana River Mainstem Project (Construction)
- Recreational & Other Land Use Leases (Asset Mgt)
- Environmental Stewardship
 - NEPA (Asset Mgt)
 - Section 404 (Regulatory)
 - Mitigation/Restoration (Construction/Asset Mgt/Planning)
 - Prado Basin (Ecosystem Restoration Feasibility Study (Planning)
 - Cultural Resources (Planning)
 - Restoration Proposals (Asset Mgt)
- Public Involvement/Collaboration (Planning)



US Army Corps
of Engineers



LOS ANGELES DISTRICT SANTA ANA RIVER MAINSTEM PROJECT

Damien Lariviere, Senior Project Manager
Los Angeles District, Corps of Engineers
19 January 2017

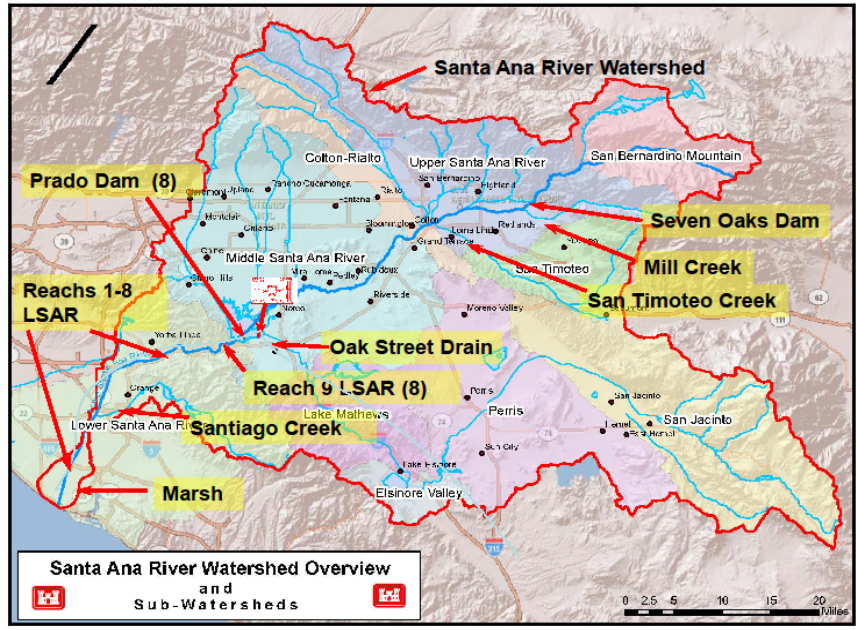
"The views, opinions and findings contained in this report are those of the authors(s) and should not be construed as an official Department of the Army position, policy or decision, unless so designated by other official documentation."



**US Army Corps
of Engineers.**



THE SANTA ANA RIVER MAINSTEM PROJECT



PRADO DAM RESERVOIR AND INTERIOR DIKES



ADOBE DIKE



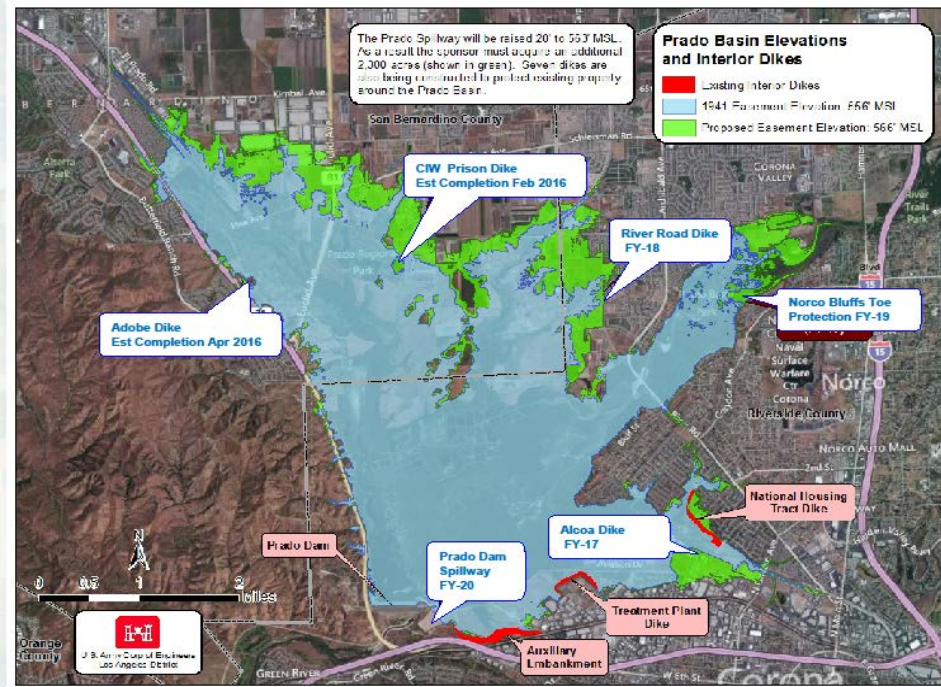
CIW DIKE



HOUSING DIKE



71 EMBANKMENT



ST DIKE

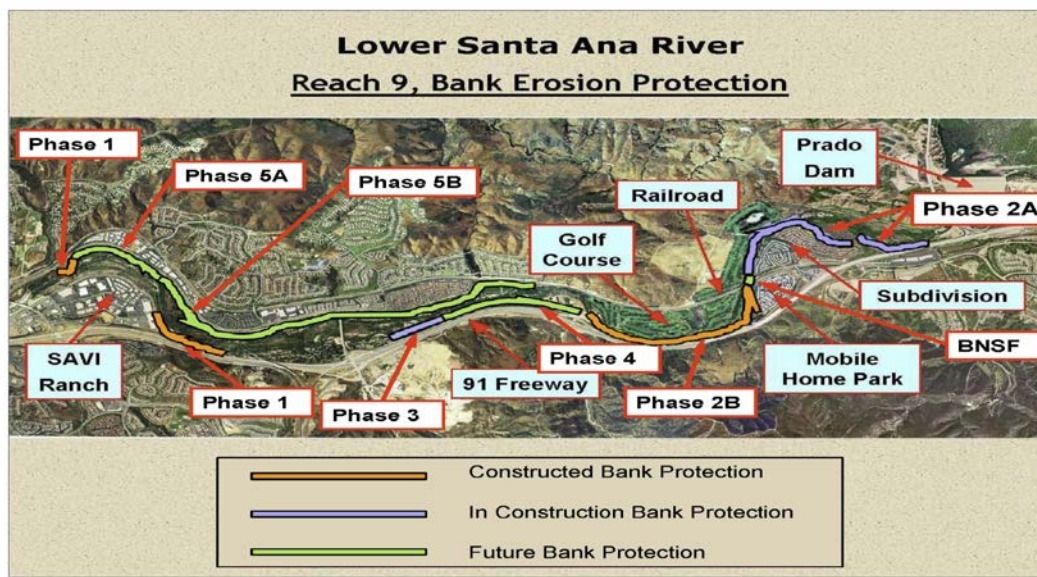
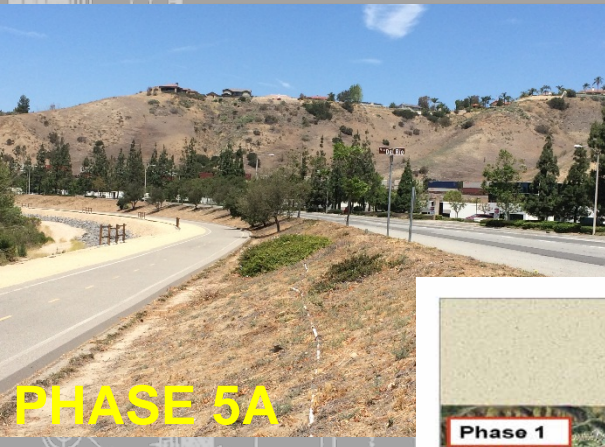


OUTLET STRUCTURE

PRADO SPILLWAY

AUXILIARY EMBANKMENT

LOWER SANTA ANA RIVER – REACH 9



DRAFT

Existing Norco Restoration

Area #3

Area #4

Area #2

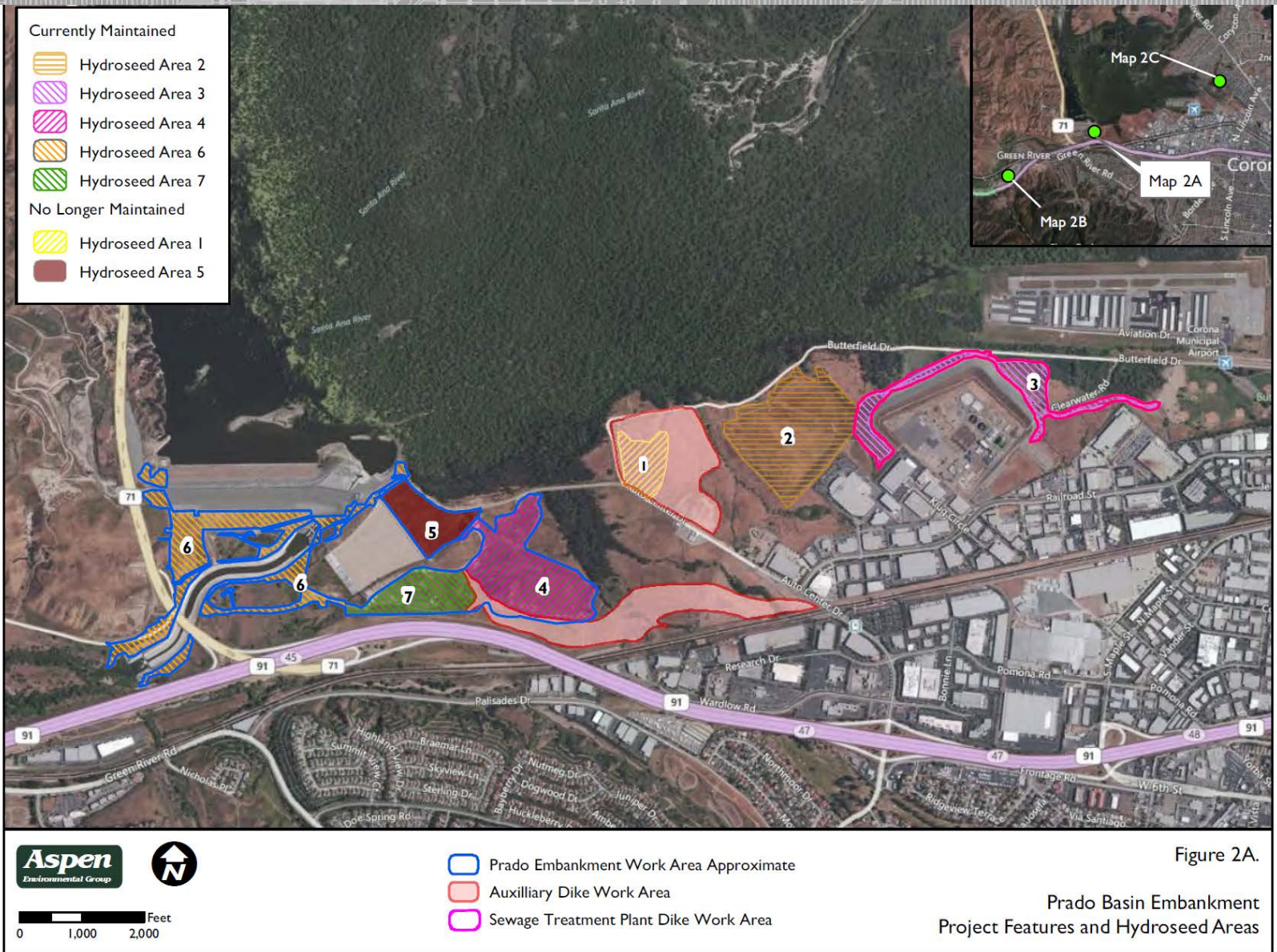
Area #1



US Army Corps
of Engineers



U.S. ARMY



February 2014

US Army Corps of Engineers



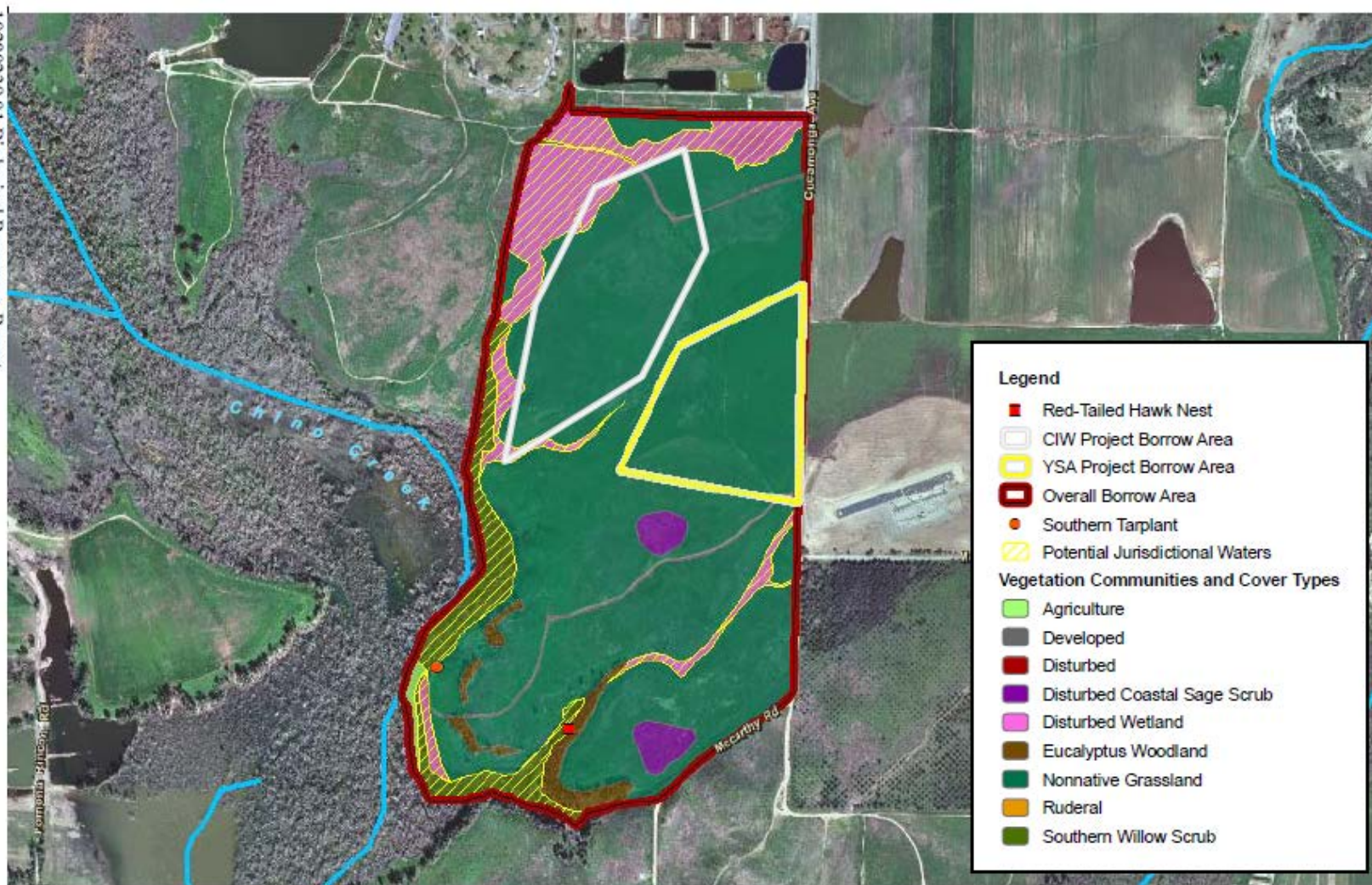


Figure 5
Borrow Area
Vegetative Communities and Cover Types

QUESTIONS

Damien A. Lariviere

Senior Project Manager

Santa Ana River Mainstem Project

Civil Works Branch, Los Angeles District

US Army Corps of Engineers

(213)452-4015 (Los Angeles Office)

(951)898-6165 (Prado Dam Office)

(213)309-4824 (Mobile)

Damien.A.Lariviere@usace.army.mil



**US Army Corps
of Engineers.**



PRADO BASIN FEASIBILITY STUDY

Ecosystem Restoration
and
Water Conservation



US Army Corps
of Engineers.



STUDY OVERVIEW

13

Dual-Purpose Study

■ Ecosystem Restoration

1. Aquatic habitat restoration
2. Arundo and other non-native/invasive species removal
3. Expand and improve native habitat

■ Water Conservation

1. Sediment removal and re-entrainment: Increase storage volume in basin, Prevent clogging of recharge areas
2. Water surface elevation increase to 505 feet year-round

Non-Federal Sponsor: OCWD

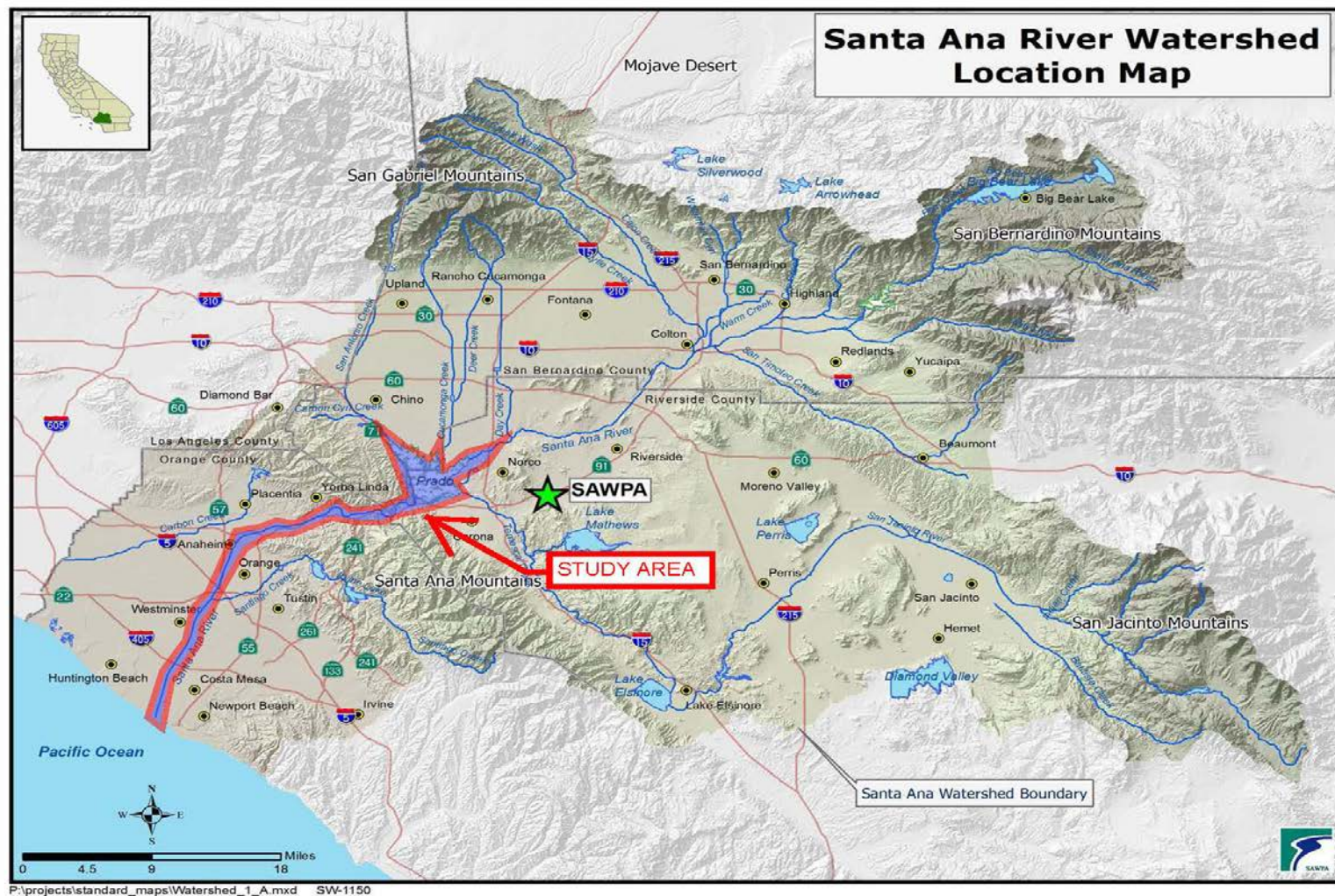
Sponsor implementing Demonstration Project for sediment re-entrainment ahead of Feasibility study



US Army Corps
of Engineers.



Prado Basin Feasibility Study Update



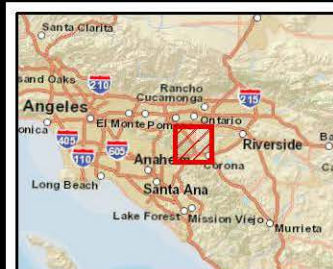
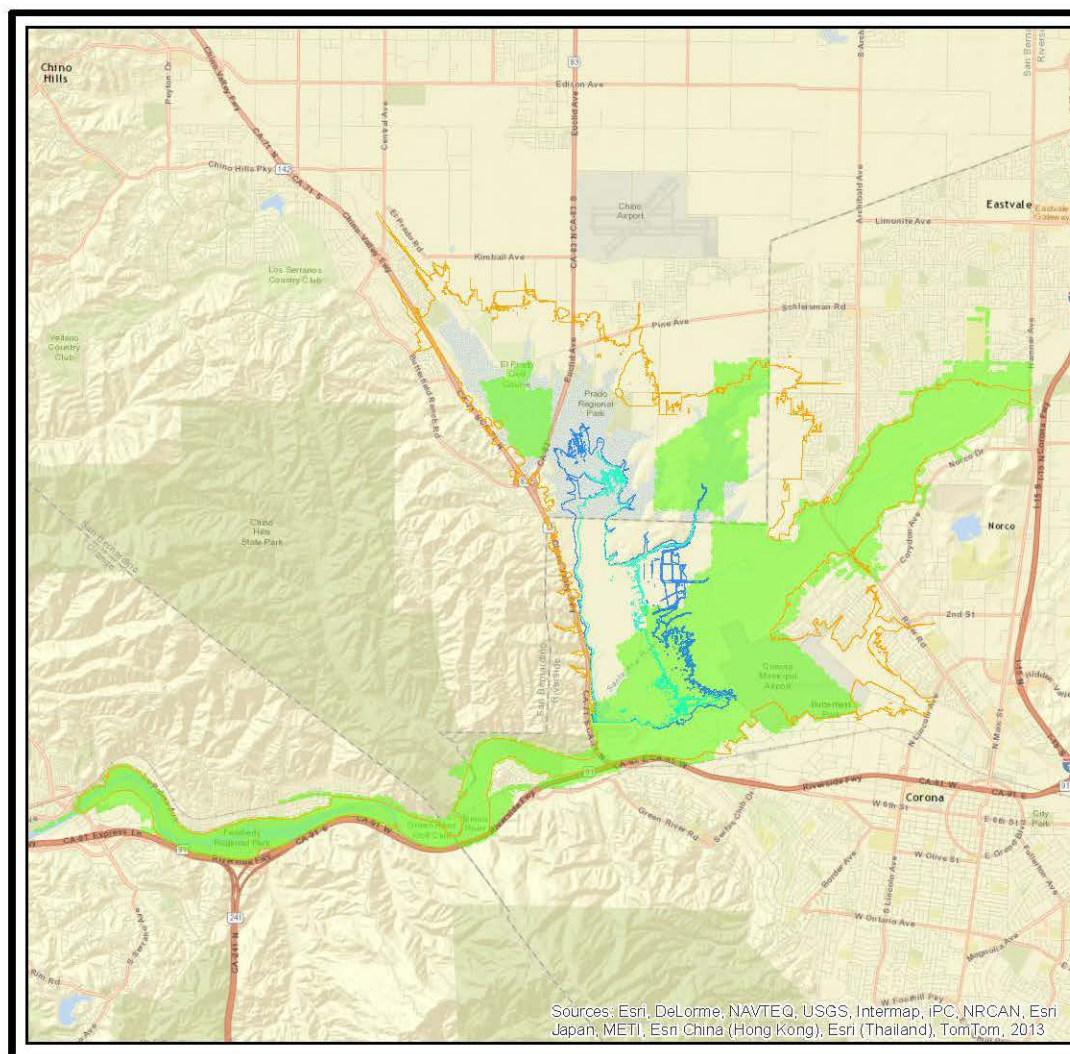
PRADO BASIN FEASIBILITY STUDY AREA

Study area includes Prado Basin and Santa Ana River Mainstem (SARM) downstream of Dam to Pacific Ocean



**US Army Corps
of Engineers**





Legend

- 498 ft MSL (2000 Survey)
- 505 ft MSL (2000 Survey)
- Study Boundary
- Target Areas

Scale:
Image Background:
ESRI/AND 60 Data: Esri/AND 60 Data
Copyright 2012 Esri, DeLorme, NAVTEQ, TomTom
Coordinate System:
State Plane California VI (NAD 83) Feet
Datum: NAD 1983
To Accompany Report Date: 03/22/2013

0 0.5 1 2
Miles
1 in = 2 miles



PRADO BASIN, CA
FEASIBILITY STUDY

STUDY BOUNDARY &
TARGET AREAS MAP



U.S. ARMY CORPS OF ENGINEERS
LOS ANGELES DISTRICT



U.S. ARMY

STUDY UPDATE

- ☒ Complete
 - ☐ Measure Formulation
 - ☐ CHAP Analysis (Habitat Output Value Assessment)
 - ☐ Economics Analysis Completed
 - ☐ Reduced Array of Alternatives Identified
- ☒ Next Steps
 - ☐ Identify TSP (Spring 2017)
 - ☐ Draft IFR (Summer 2017)
 - ☒ Chief of Engineers' Report (Study Complete mid 2019)



US Army Corps
of Engineers



PRADO DAM MASTER PLAN UPDATE



Stakeholder Meeting

Prepared by Wendy Loeffler, RECON Environmental &
Megan Wong, USACE Los Angeles District

For Inland Empire Utilities Agency Stakeholders

19 January 2017

"The views, opinions and findings contained in this report are those of the authors(s) and should not be construed as an official Department of the Army position, policy or decision, unless so designated by other official documentation."



**US Army Corps
of Engineers.**



PRADO DAM BASIN MASTER PLAN UPDATE

Presentation Outline:

- Master Planning Overview and Guidance
- Prado Dam Basin History
- Master Plan Update Project History
- Review of need for update
- Overview of study area
- Review Objectives and Land Classifications
- Master Plan Update document outline
- Solicit data and input from stakeholders



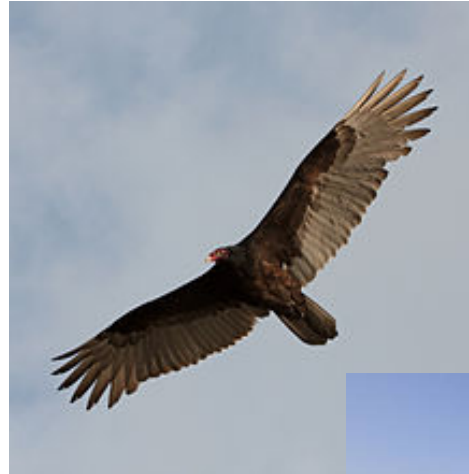
US Army Corps
of Engineers.



PRADO DAM BASIN MASTER PLAN UPDATE

Master Plans are prepared by the Corps of Engineers and govern the operations of the Corps-owned lands within the reservoirs.

The plans are periodically updated to ensure that they reflect current conditions, as well as guide the vision of the future.



US Army Corps
of Engineers.



PRADO DAM BASIN MASTER PLAN UPDATE

ER 1130-2-550 2.2 a.(1) guides development of the plans and provides the Program Mission.

The Corps functions as the steward of the lands and waters and will:

- Manage/conserve natural resources per Natural Resources Management Mission
- Provide quality public outdoor recreation experiences
- Promote natural and cultural resources awareness, stewardship, protection, compliance and restoration
- Integrate the management of natural resources with public recreation
- Manage for long-term public access



US Army Corps
of Engineers.



PRADO DAM BASIN MASTER PLAN UPDATE

Authorized by Congress in 1936. Construction completed in 1941. Primary authorized purpose for the Dam is:

- Flood Risk Management

Secondary authorized purposes for the Basin are:

- Water Conservation
- Recreation
- Environmental Stewardship



US Army Corps
of Engineers.



PRADO DAM BASIN MASTER PLAN UPDATE

Project Timeline

- 1976 -- Recreation Master Plan for the Prado Dam Reservoir Area
- 1990's -- Revisions begun based on input from associated watershed projects
- 2005 -- Draft Master Plan Update and EIS prepared and submitted for public review; comments received resulted in a change in direction
 - Overemphasis on Recreation
 - Unclear presentation of environmental constraints
- 2010 -- Update reinstated but halted due to lack of funding resources
- 2016 -- Master Plan Update funded



US Army Corps
of Engineers.



PRADO DAM BASIN MASTER PLAN UPDATE

Update needed based on landscape changes since 1976:

- Increase in the amount of sensitive biological resources
- Increase in visitation and variety of recreation opportunities.
- The changing profile of adjacent land uses
- Increase in development intensity
- Modifications to Dam and other areas within the basin
- Designation and restoration of lands as flood control mitigation
- Modifications to the Water Control Manual for water conservation
- Changes in recreation trail planning and implementation
- Proposed habitat restoration and expanded water conservation



US Army Corps
of Engineers.



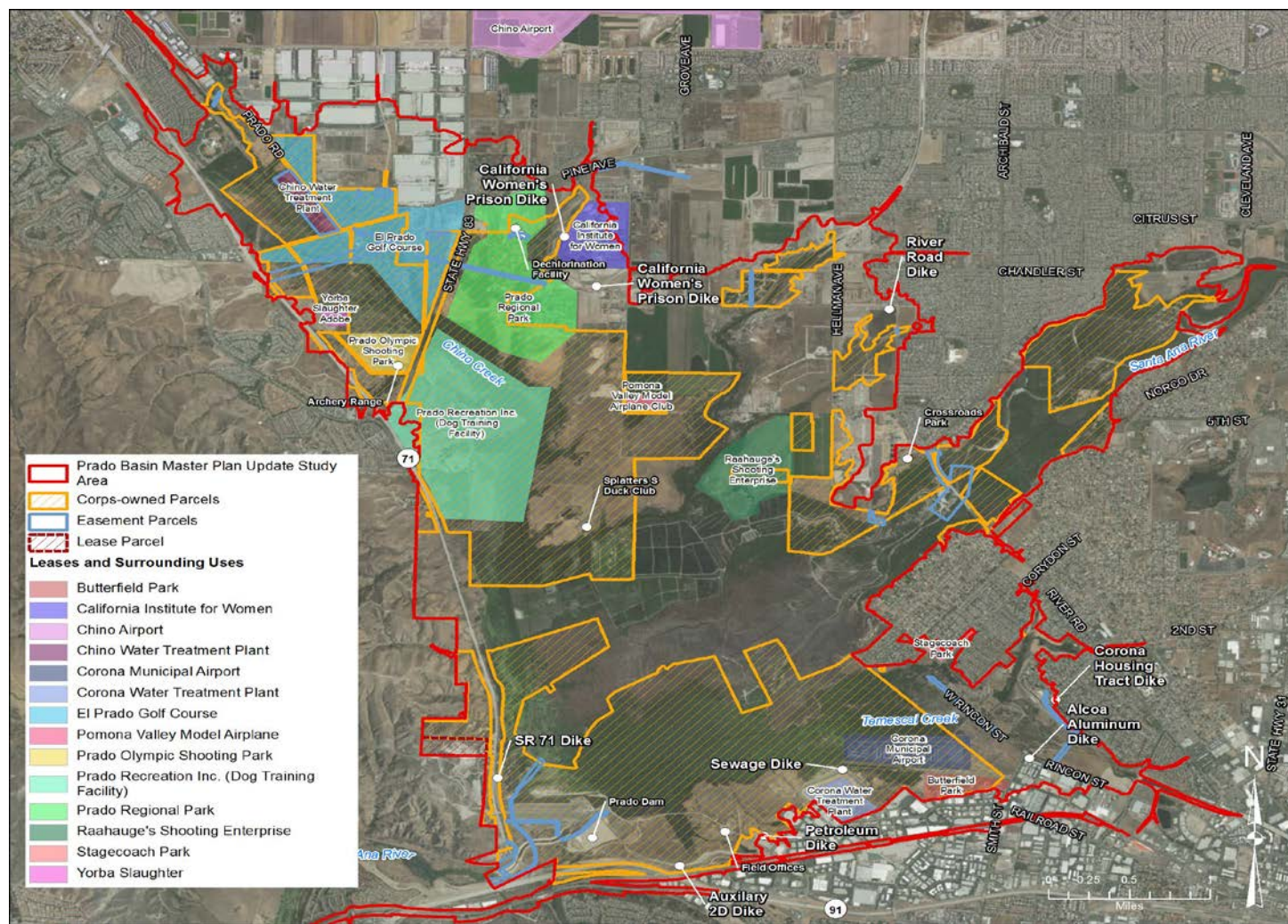
Prado Basin Master Plan Update Study Area

- Prado Basin Master Plan Update Study Area
- Corps-owned Parcels
- Lease Parcel
- Noted Easement Parcels

Scale: 0 0.375 0.75 1.5 Miles



PRADO DAM BASIN MASTER PLAN UPDATE DRAFT PRIMARY LEASEES AND RECREATION



**Draft boundary and Corps-owned parcels subject to final verification by the Corps



US Army Corps
of Engineers.



PRADO DAM BASIN MASTER PLAN UPDATE

Plan Update Will Address:

- Flood Risk Management
- Safety
- Recreation
- Education and Interpretation
- Environmental Quality and Character
- Community Involvement
- Water, Soil, Air Quality
- Cultural Resources
- Visual and Auditory Quality
- Global Climate Change
- Wildlife Habitat
- Native Plant Communities



US Army Corps
of Engineers.



PRADO DAM BASIN MASTER PLAN UPDATE

Land Classifications:

- **Operations**

- Lands used solely for operation of the dam (e.g. dam, spillway, levees, dikes, maintenance facilities, etc.)

- **High Density Recreation**

- Lands used for intensive recreation by the public (e.g. day use areas, campgrounds, public concessions, quasi-public development)

- **Environmentally Sensitive**

- “Areas where scientific, ecological, cultural or aesthetic features have been identified.”



US Army Corps
of Engineers.



PRADO DAM BASIN MASTER PLAN UPDATE

Land Classifications (continued):

- **Multiple Resource Management:** Lands with one of the following predominate uses that also allow for other compatible uses
 - **Low Density Recreation**
 - **Passive recreational areas with minimal development**
 - **Wildlife Management**
 - **Lands designated for fish and wildlife stewardship**
 - **Vegetation Management**
 - **Lands designated for native vegetation stewardship**



US Army Corps
of Engineers.



PRADO DAM BASIN MASTER PLAN UPDATE

Land Classifications (continued):

- **Multiple Resource Management**
 - **Inactive or Future Recreation**
 - Closed recreation areas or areas with characteristics compatible with future recreation. Lands will be managed for multiple use until recreational status changes.
 - **Other Uses (e.g. Agriculture, easements)**



US Army Corps
of Engineers.



PRADO DAM BASIN MASTER PLAN UPDATE

Draft Plan Document Outline:

- Project Authorization
- Project Description
- Planning Process including Community Workshops
- Land Allocations, Land Use and Resource Inventory
(Existing Conditions)
- Land Classifications
- Resource Objectives
- Land Use and Resource Plan Recommendations
- Appendices



US Army Corps
of Engineers.

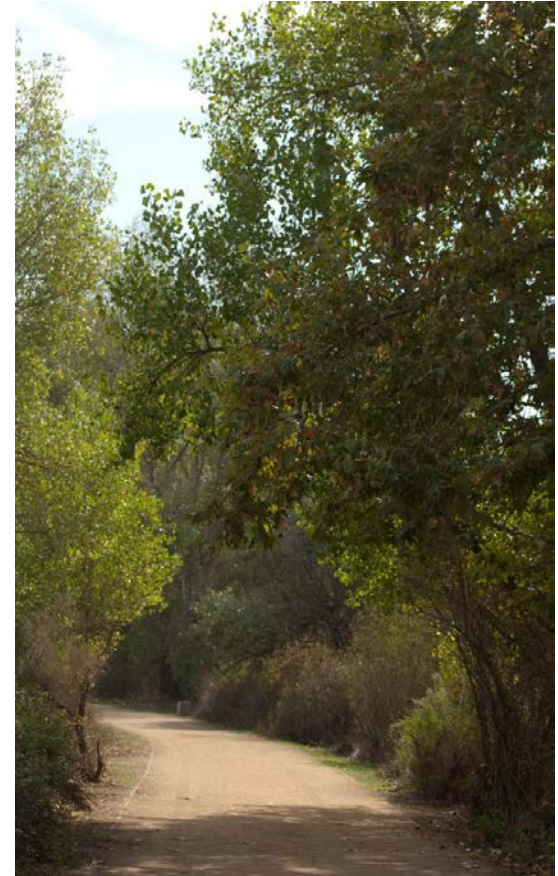


PRADO DAM BASIN MASTER PLAN UPDATE

Next Steps:

- 2nd Stakeholder Meeting and Input
- Preparation of Draft Plan
- 3rd Stakeholder Meeting and Input
- Preparation of Final Draft Plan

Megan Wong 213-448-4517
Project Environmental Coordinator
Megan.T.Wong@usace.army.mil



US Army Corps
of Engineers.



PRADO DAM BASIN MASTER PLAN UPDATE

Please tell us about:

- Your recent activities
- Areas of concern
 - Safety
 - Recreation
 - Access
 - Corridors
- Proposed future activities
- Studies or data collected
- Suggestions?



US Army Corps
of Engineers.



**Prado Dam Basin Master Plan Update - Stakeholder Meeting
January 19, 2017 at the IEUA**

Sign-In

Name	Agency	Email Address	Phone
Amy Bonczewski	OCWD Ontario	abonczewski@ontarioca.gov	909-395-2614
Jason Uhley	Rio Co Flood	juhley@rcflood.org	951 955-1250
KEVIN BLAKESLEE	S.B. Co Flood	kblakeslee@dpw.sbcounty.gov	909-387-7978
KEN EKE	S.B. Co Flood	keke@dpw.sbcounty.gov	909 387-8120
DAVID LOVELL	S.B. Co. Flood	dlovell@dpw.sbcounty.gov	909-387-7964
Melody Aimar	SAWA	maimar@sawatershed.org	951-538-1950
David McMichael	OCWD	dmmichael@ocwd	714 3 25 -6136
Hugh Wood	SAWA	hwood@sawatershed.org	714-768-3545
Ric Welch	JCSD	rwelch@jcsd.us	951-830-1615
Natalia Doshi	OCWD	ndoshi@ocwd.com	(619) 750-7705
Bonnie Johnson	OCWD	bjohnson@ocwd.com	957-757-0782
Camelia Maubeth	OCWD	cmaubeth@ocwd.com	(714) 378-9259
Dave Woelfel	SARWQCB	Dave.Woelfel@waterboards.ca.gov	951 782-7960

**Prado Dam Basin Master Plan Update - Stakeholder Meeting
January 19, 2017 at the IEUA**

Sign-In

Name	Agency	Email Address	Phone
RAUL GARIBAY	CITY OF POMONA	raul.garibay@cityofpomona2.ca.us	909-620-2239
Edgar Tellez Foster	CBWM	etellezfoster@cbwm.org	
ANDY MALONE	WILDERMUTH ENVIRONMENTAL	amalone@weiwater.com	949.420.3030
Jesus Plasencia	City of Chino	jplasencia@cityofchino.org	909.334.3417
Willie Starks	USACE	willie.e.starks@usace.army.mil	213-452-3440
Katie Parks	USACE	Katie.b.parks@usace.army.mil	(213) 452-3399
Hayley Loran	USACE	Hayley.J.Loran@usace.army.mil	213-452-3863
DAMIAN LARIVIERE	USACE	damien.a.lariviere@usace.army.mil	(213) 452-4015
Wendy Loeffler	RECON ENV.	wloeffler@reconenvironmental.com	619-308-9333 ext 113
Megan Wong	USACE	Megan.T.Wong@usace.army.mil	(213) 448-4517
Edith Martinez	CDFW	edith.martinez@wildlife.ca.gov	(909) 944-0187
Claire Ingel	CDFW	claire.ingel@wildlife.ca.gov	909-404-3979
Greg Woodside	OCWD	gwoodside@ocwd.com	714 378-3275
James Law	SAWA	jlaw@sawatershed.org	909 771-6903
Jesse Ortiz	SAWA	Jortiz@sawatershed.org	951-388-0596

**Prado Dam Basin Master Plan Update - Stakeholder Meeting
January 19, 2017 at the IEUA**

Sign-In

Name	Agency	Email Address	Phone
David Ruhl	SAWPA	druhl@sawpa.org	951 354-4223
Mallory Gandara	Western MWD	mgandara@wmwd.com	951-571-7294
AJ Gerden	SB County Reg. Parks	agerden@parks.sbcounty.gov	387-2410 909 855
Ben Lewis	Thomas Harder + Co	blewis@thomashardercorp.com	714 714-3875
JASON PIVNAROFF	IEUA	JPIVNAROFF@IEUA.ORG	909-993-1600
Ryan Shaw	Western MWD	rshaw@wmwd.com	951.571.7256
JEFF ERNST	OC Public Works	jeff.ernst@ocpw.ocgov.com	714 647-3263
MEHDI SOBHANI	OC Public Works	mehdi.sobhani@ocpw.ocgov.com	714-647-5998
LIZA MUÑOZ	IEUA	LMUNOZ@IEUA.ORG	909-993-1522
NADEEM MAJAJ	CHINO HILLS	nmajaja@chinohills.org	909-364-2801
JASON MARSEILLES	IEUA	JMARSEILLES@IEUA.ORG	909-993-1823

Prado Dam Basin Master Plan Update - Stakeholder Meeting January 19, 2017 at the IEUA

Sign-In

[illegible]